

## ACCELEROMETER



Two types of accelerometer are available: Gas and Capacitive. Both are available in either Single or Twin axis formats.

The Gas displacement type is ideal for chassis analysis, whilst the Capacitive variety is better suited to element analysis.

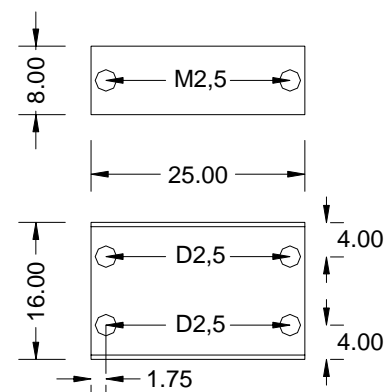
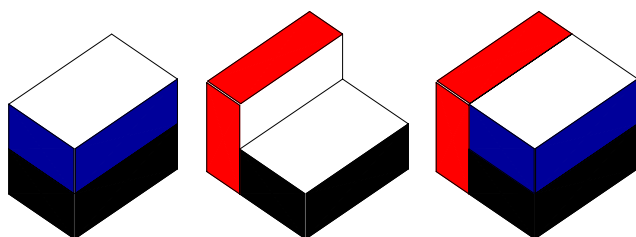
All models operate on a 5 to 16V DC supply and can be grounded via any convenient chassis ground point.

A clever, yet simple, combination of threaded and clearance holes allows the units to be easily mounted to the chassis or each other.

Part Number	1XACG-Value	1XACC-Value	2XACG-Value	2XACC-Value
<b>SENSOR CHARACTERISTICS</b>				
Technology	Gas	Capacitive	Gas	Capacitive
Type	Single Axis	Single Axis	Single Axis	Single Axis
Range	+/- 1 to 10 G	+/- 1 to 20 G	+/- 1 to 10 G	+/- 1 to 20 G
Output signal	2,5 V +/- 2 V	2,5 V +/- 2 V	2,5 V +/- 2 V	2,5 V +/- 2 V
Non linearity	0,5 %	0,3 %	0,5 %	0,3 %
Transverse sensitivity	1 %	2 %	1 %	2 %
Sensitivity drift	1 % (20 to 60°C)	1 % (20 to 80°C)	1 % (20 to 60°C)	1 % (20 to 80°C)
Zero drift	20 mV (20 to 60°C)	20 mV (20 to 80°C)	20 mV (20 to 60°C)	20 mV (20 to 80°C)
Bandwidth Std	DC to 40 Hz	DC to 100 Hz	DC to 40 Hz	DC to 100 Hz
Resonance	---	5 KHz	---	5 KHz
Max Bandwidth on request	---	1 KHz	---	1 KHz
<b>ELECTRICAL CHARACTERISTICS</b>				
Supply Voltage	5 to 16V		5 to 16V	
Current draw	<10mA		<10mA	
Standard Supplied Cable	1 mtr PTFE 26AWG STT <sup>1</sup>		1 mtr PTFE 26AWG STQ <sup>2</sup>	
Circuit Colours <sup>3</sup>	Red +VE, White Sig, Blue Gnd.		Red +VE, White Sig 1, Yellow Sig 2, Blue Gnd.	
Screen Connection	To Case		To Case	
<b>MECHANICAL CHARACTERISTICS</b>				
Housing	Red anodised alloy housing		Red anodised alloy housing	
Operating Temperature Range	-20 to +100°C		-20 to +100°C	
Weight	15g		15g	

1. Screened Twisted Triple is available in other specifications if required.
2. Screened Twisted Quad cable is available in other specifications if required.
3. Circuit colours may differ with different cables – always check the calibration sheet supplied with each sensor.

For more information, or to place an order, please contact Steve or Tony James at the address below.



Tel : +44 (0) 1379 854485 Fax : +44 (0) 1379 852718

e-mail : [enquiries@tonyjames.co.uk](mailto:enquiries@tonyjames.co.uk) [www.tonyjames.co.uk](http://www.tonyjames.co.uk)

Tony James Component Wiring Ltd, Speedwell Way, Harleston, Norfolk IP20 9EH, England.